

STOCK CODE: 300351

CONNECTION TO FUTURE



YGC - 50 Years for Railway Connection Technology



Content



Company Profile



Railway Capability



Product Applications



Globalization

Our Company

Yonggui Company (“YGC”) is a **high-tech enterprise** with 51 years expertise focused on the research and development, manufacturing, sales and technical support of connectors, connector systems and smart precision products. It was listed on **Shenzhen Stock Exchange** in September 2012. The products are distributed in the three major fields of **new energy and vehicle (51%)**, **railway and industrial (44%)**, **special market (5%)**.

Yonggui has **668 national patents**, and has obtained ISO 9001, ISO/TS 22163, CRCC, ETL, UL and IATF16949 certifications.



Market Value

¥7,343M (\$1.02B)



2023 total sales

¥ 1,933M (\$268M)



Consolidated sales

¥ 1,518M (\$211M)



Employee

~2362 (32% engineers)

*market value at 2024/12/6; USD/CNY = 7.2

50+ Years History of Entrepreneurship

World-Class Interconnect Supplier

1973

Foundation

1979

Build 1st
connector

2008

Sichuan
Yonggui Set up

2009

High speed
train entry

2012

IPO; Enter new
energy market



2014

Special
market entry

2017

JV with
Toyo (Japan)



2018

Yonggui Group
establishment

2019+

Business
transforming
to new energy
focus

2023

Globalization

2024

Singapore
office &
Thailand
plant set up

Interconnect Solutions for Key Market Trends

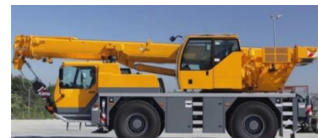
New Energy

Electric vehicles; private charge & public charging; energy storage; wind power



Industrial

Railway, telecom & data center, off road, industry 4.0



Special Segments

Oil & gas, nuclear power plant, civil marine & aviation, eVTOL



Our Customers Around Global

China



Rest of APAC



Europe



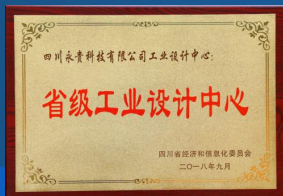
America



Industrial & Customer Awards



National IP Demonstration Company



State Industrial design center



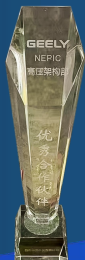
National High tech company



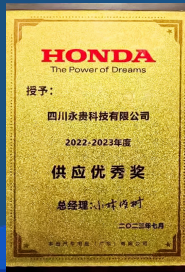
State Enterprise technology center



CRRC Best Supplier Award



GEELY Outstanding Partner Award



HONDA Best Supplier Award



CRRC Outstanding Contribution Supplier Award



SANY Best Supplier Award



Dongfang Electric Best Supplier Award



Changan Electrification Contribution Award



VTour Outstanding Partner Award

Patents

668 patents authorized

119 Invention patents

518 utility model patents

31 appearance patents



Manufacturing Capability

VI model for quick response, quality improve & cost control

Injection Molding: 80M+ pcs



Precision Machining: 70M+ pcs



Plating Workshop: 500M+ pcs



Stamping: 50M+ pcs



Die casting: 2M+ pcs



Assembly: 75M+ pcs



Focused Products – Railway Connectors

Electric coupler, integrated vehicle end connector



Control, high-low voltage, signal vehicle end connector



Control, network, division console connector



Control, network, AC connector



Integrated cabinet & Jumpers



350+ Railway Projects Globally



City	type	Product	delivery year
Brazil	subway	connector + jumper	2010
Iran	subway	connector + jumper	2012
Izmir, Turkey	subway	cabinet + connector + jumper	2016
São Paulo, Brazil	subway	cabinet + connector + jumper	2018
Angola	Passenger Car	connector + jumper	2019
Kolkata, India	subway	connector + jumper	2019
Bio, Chile	subway	cabinet + connector + jumper	2020
Turkey	subway	cabinet + connector + jumper	2020
Monterrey, Mexico	tram	cabinet + connector + jumper	2020
Turkey	subway	connector + jumper	2021
Porto, Portugal	tram	cabinet + connector + jumper	2021
Alameda, Chile	High-Speed EMU	cabinet + connector + jumper	2021
Mexico City, Mexico	Rubber-Tired Vehicle	connector + jumper	2021
United Arab Emirates	High-Speed EMU	cabinet + connector + jumper	2022
Iran	subway	connector + jumper	2023
Bangalore, India	subway	connector + jumper	2023
Rancagua, Chile	tram	cabinet + connector + jumper	2023
United Arab Emirates	tram	cabinet + connector + jumper	2023
Turkey	subway	cabinet + connector + jumper	2023

- YG HDC connector products have been supplied since 2004 and have been installed on more than 350 projects both domestically and internationally, including 43 foreign projects in New York, Mexico, Germany, South Korea, Malaysia, Singapore, Saudi Arabia, etc.

46+ High Speed Train Projects



Serial Number	Customer Name	Project	Year Of Delivery	Project Status
1	CRRC	200 km/h EMU	In 2010	Completed supply is running
2	CRRC	350 km/h new generation EMU (short series)	In 2010	Completed supply is running
3	CRRC	350 km/h new generation EMU (long)	Year 2011	Completed supply is running
4	CRRC	CRH6 intercity EMU	In 2012	Completed supply is running
5	CRRC	CRH5 EMU	2012	Completed supply is running
6	CRRC	200 km intercity EMU	In 2012	Completed supply is running
7	CRRC	160 km intercity EMU	In 2012	Completed supply is running
8	CRRC	CRH3A and 3G EMUs	In 2012	Completed supply is running
9	CRRC	CRH6	In 2013	Completed supply is running
10	CRRC	The vehicle has a speed of 250 kilometers per hour	In 2013	Completed supply is running
11	CRRC	The vehicle has a speed of 350 kilometers per hour	In 2013	Completed supply is running
12	CRRC	200 km/h EMU	In 2013	Completed supply is running
13	CRRC	Guangzhou-Shenzhen-Hong Kong EMU	In 2013	Completed supply is running
14	CRRC	Permanent magnet motor project	In 2013	Completed supply is running
15	Bombardier	807 project	In 2013	Completed supply is running
16	CRRC	CRH3 EMU	In 2013	Completed supply is running

17	CRRC	CRH3 EMU	2013 columns	Completed supply is running
18	CRRC	Inspection vehicle	In 2014	Completed supply is running
19	CRRC	160 km/h intercity EMU	In 2014	Completed supply is running
20	CRRC	The vehicle has a speed of 250 kilometers per hour	In 2014	Completed supply is running
21	CRRC	The vehicle has a speed of 350 kilometers per hour	In 2014	Completed supply is running
22	CRRC	CRH 140 km intercity EMU	In 2014	Completed supply is running
23	CRRC	CRH3X EMU	In 2015	Complete the supply
24	CRRC	250 km/h long sleeper EMU	In 2015	Complete the supply
25	CRRC	CRH5 EMU	In 2015	Completed supply is running
26	CRRC	A standard EMU with a speed of 350 kilometers per hour	In 2017	Completed supply is running
27	CRRC	A standard EMU with a speed of 350 kilometers per hour	In 2018	Completed supply is running
29	CRRC	A standard EMU with a speed of 350 kilometers per hour	In 2019	Run in batches
30	CRRC	A standard EMU with a speed of 350 kilometers per hour	In 2019	Run in batches
31	CRRC	A standard EMU with a speed of 350 kilometers per hour	In 2018	Run in batches
32	CRRC	250 km/h standard EMU	In 2018	Completed supply is running
33	CRRC	CR400 EMU	In 2018	Completed supply is running
34	CRRC	A standard EMU with a speed of 350 kilometers per hour	In 2019	Run in batches
35	CRRC	A standard EMU with a speed of 350 kilometers per hour	In 2019	Run in batches
36	CRRC	Vehiclego sports vehicle group	In 2019	Deliveries have been completed
37	CRRC	A typical prototype of a double-decker EMU with a speed of 350 kilometers per hour	In 2019	Deliveries have been completed

38	CRRC	CJ6 intercity EMU	In 2022	Completed supply is running
39	CRRC	250 km/h standard EMU	In 2020	Run in batches
40	CRRC	250 km/h standard EMU	In 2020	Deliveries have been completed
41	CRRC	Taizhou CRH6F-A EMU	In 2020	Deliveries have been completed
42	CRRC	160 km/h power centralized EMU (drum)	In 2021	Run in batches
43	CRRC	200 km/h EMU (City C-type vehicle)	In 2022	Positive loading
44	CRRC	CR series EMUs CRH series EMUs	hitherto	Completed supply is running
45	CRRC	CR series EMUs CRH series EMUs	hitherto	Completed supply is running
46	CRRC	The speed of 350 kilometers per hour Fuxing intelligent EMU	In 2022	Completed 1 line of supply

E-coupler Projects



Global project

- Kuala Lumpur Airport Line
- Turkey Low Floor Electric Coupler
- Pakistan Metro
- Brazil Sao Paulo Metro Line 13
- Spain LUGANO Electric Coupler
- Chile EMU Electric Coupler
- Vienna project
- Cairo Monorail
- Turkey project
- TSI European EMU
- Mexico Monterrey
- TSI European EMU (Romania)
- other projects

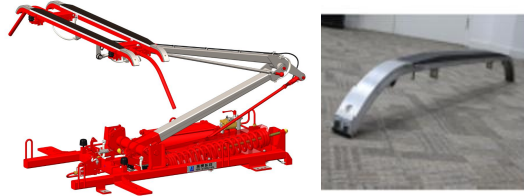
- YGC is 1# e-coupler supplier in China and serves global market as well

Products – Railway Connection Systems

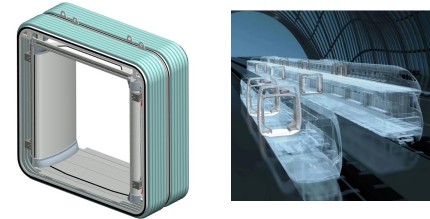
Axle counter



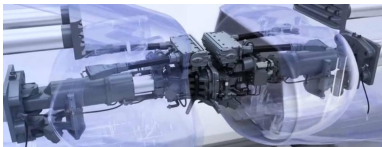
Pantograph & carbon slide



Railway gangway



Automatic Coupler System



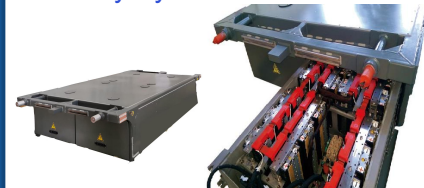
Oil pressure damper



Door system



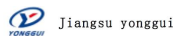
Battery System



Railway Battery Projects

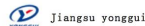


Project Performance – National Advanced R&D Projects



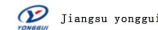
No	Customer	Project	Battery System Functions	Quantity
1	CRRC Changke / Tangshan	Fuxing EMU	Auxiliary power supply	55
2	CRRC Sifang	The 600 km of high-speed maglev suspension	Auxiliary power supply + the suspension	1
3	CRRC Sifang	Hydrogen energy intelligent intercity bullet train	Auxiliary power supply + power supply	1
4	CRRC Sifang	The CR450 Next Generation HSR	Auxiliary power supply	1
5	CRRC Sifang	Sichuan-Tibet line	Auxiliary power supply + emergency traction	1

Project Performance – High Speed Trains



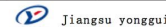
No	Customer	Project	Battery System Functions	Quantity	SOP
1	CRRC Changke	City bullet train	Auxiliary power supply	11	2021
2	CRRC Pu Town	City bullet train	Auxiliary power supply	2	2022
3	CRRC Changke	400 km EMU (high and cold)	Auxiliary power supply	1	2019
4	CRRC Tangshan	Cargo bullet train	Auxiliary power supply	1	2019
5	CRRC Tangshan	High-speed testing vehicle	Auxiliary power supply	1	2019
6	CRRC Dalian	Low speed maglev	Auxiliary power supply + the suspension	1	2010
7	CRRC strain machine	Medium speed magnetic levitation	Auxiliary power supply + the suspension	1	2020

Project Performance – Metro Lines



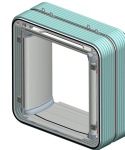
No	Customer	Project	Battery System Functions	Quantity	SOP
1	CRRC Changke	Chongqing Line 27	Auxiliary power supply + emergency traction	32	2025-2026
2	CRRC Sifang	Qingdao Metro Line 7	Auxiliary power supply + emergency traction	30	2024-2025
3	CRRC Sifang	Jiaozhou L1	Power supply	25	2023-2024
4	CRRC Puzhen	Shaoxing Metro Line 2	Auxiliary power supply + emergency lead	7	2022
5	CRRC	Tianjin Metro Line 1 for additional purchase	Auxiliary power supply + emergency lead	4	2024
6	CRRC Puzhen	Shenzhen Metro Line 6 branch line	Auxiliary power supply + emergency lead	2	2022
7	CRRC Dalian	Taiyuan Metro Line 2	Auxiliary power supply + emergency traction	2	2020

Project Performance – Other Trains



No	Customer	Project	Battery System Functions	Quantity	SOP
1	CRRC	Pure electric tram	Power supply	15	2023-2024
2	CRRC Sifang	Lishui hydrogen-powered tram	Power supply	12	2024-2025
3	CRRC	Harbin engineering car	Power supply	2	2019
4	Shanghai Railway Bureau	Dongfeng 7 shunting machine	Power supply	5	2021
5	Shanghai Railway Bureau	machineshop truck	Power supply	1	2020

Gangway Projects



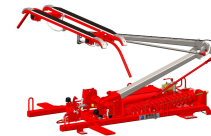
永贵贯通道业绩一览表

Supply Records of Yonggui Gangways

类型 Type	序号 No.	项目名称 Project	车辆型号 Vehicle Type	数量 Quantity	客户 Customer
海外项目 Foreign projects	1	沙特麦加地铁 Saudi Arabia Mecca Metro	地铁 A 型车 12 编组 A type metro, 12 cars per rake of train	176 套 176 sets	中车长客 CRRC Changchun
	2	印尼雅加达通勤线 Indonesia Jakarta Commuter Line	地铁 12 编组 EMU 12 cars per rake of train	177 套 177 sets	印尼 INKA 车辆厂 Indonesia INKA
	3	印尼 700/1100 车端距项目 Indonesia 700/1100 car distance project	地铁 6 编组 Metro, 6 cars per rake of train	155 套 155 sets	印尼 INKA 车辆厂 Indonesia INKA
	4	印尼雅加达亚运会项目 Indonesia Jakarta Asian Games project	地铁 6 编组 Metro, 6 cars per rake of train	40 套 40sets	印尼 INKA 车辆厂 Indonesia INKA
	5	俄罗斯高铁项目 Russian high-speed rail	200KM 高铁 200KM high-speed rail	9 套 9 sets	俄罗斯 VSM 车辆厂 Russian VSM-Service LLC
	6	俄罗斯 PA3 项目 Russian Railways PA3 project	120KM 国铁 120KM Russian Railways	14 套 14 sets	俄罗斯 JSC JSC Russian Railways (CDMV)
	7	印度高铁 T18 India high speed train T18	印度高铁 T18 India high speed train T18	20 套 20 sets	印度 ICF 车辆厂 India ICF
	8	印度半风挡 India half module gangway	印度 LHB 车 India LHB coaches	43 套 43 sets	印度 ICF 车辆厂 India ICF
	9	韩国 EMU 项目 Korea EMU	一片式柔性护板 One piece flexible protection plate	15 套 15 sets	韩国现代 Rotem 车辆厂 Korea Rotem

- 52 Global projects since 2012
- 11 Intercity EMU projects
- 24 metro projects
- 9 overhaul projects
- 9 global projects

Pantograph Projects



Statement of performance

NO.	Delivery time	client	Project content	Number of supply columns	Number of pantographs	remark
1	May 2018	Chengdu Changke Xinzhu Rail Transit Equipment Co., Ltd	Chengdu Metro Line 5	52	156	
2	April 2018	CRRC Changchun Rail Coach Co., Ltd	Chengdu Metro Line 5	10	30	
3	December 2018	Chengdu Changke Xinzhu Rail Transit Equipment Co., Ltd	Chengdu Metro Line 8	38	76	
4	November 2018	CRRC Changchun Rail Coach Co., Ltd	Chengdu Metro Line 8	5	10	
5	June 2018	Chengdu CRRC Sifang Rail Vehicle Co., Ltd	Chengdu Metro Line 6	60	180	
6	June 2018	CRRC Chengdu Locomotive and Rolling Stock Co., Ltd	Chengdu Metro Line 6	15	45	
7	June 2019	Chengdu CRRC Sifang Rail Vehicle Co., Ltd	Chengdu Metro Line 11	16	48	
8	April 2019	CRRC Chengdu Locomotive and Rolling Stock Co., Ltd	Chengdu Metro Line 11	17	51	
9	December 2019	Chengdu Changke Xinzhu Rail Transit Equipment Co., Ltd	Dujiangyan M-TR project	18	18	streetcar
10	October 2019	Zhuhai Nanzi Electrical System Engineering Co., Ltd	Chengdu Line 6 engineering inspection cart	1	2	
11	October 2019	Beijing Qifan Lutong Technology Co., Ltd	Chengdu Line 6 pantograph Grid inspection cart	1	1	
12	December 2019	Chengdu CRRC Sifang Rail Vehicle Co., Ltd	Chengdu Line 1 overhaul	17	34	overhaul

13	January 2020	Jiangsu Jinchuang Rail Technology Co., Ltd	Chengdu Line 11 engineering inspection cart	1	1	
14	May 2020	Chengdu Changke Xinzhu Rail Transit Equipment Co., Ltd	Chengdu Line 4 frame repair	27	54	Frame repair
15	September 2020	CRRC Tangshan Locomotive and Rolling Stock Co., Ltd	Taizhou S1 line	31	62	municipality
16	September 2020	China Railway Rail Transit Equipment Co., Ltd	CM160 City Car Project	1	1	municipality
17	February 2021	Chengdu CRRC Sifang Rail Vehicle Co., Ltd	Chengdu Metro Line 2 overhauled 1.2 million kilometers	32	64	overhaul
18	February 2021	Chengdu Changke Xinzhu Rail Transit Equipment Co., Ltd	Chengdu 160KM city car trial production project	1	2	municipality
19	February 2021	CRRC Chengdu Locomotive and Rolling Stock Co., Ltd	Chengdu 160KM city car trial production project	1	1	municipality
20	February 2021	CRRC Changchun Rail Coach Co., Ltd	Tianjin Metro Line 6 and 8	32	64	
21	July 2021	Chongqing CRRC Long Passenger Rail Vehicle Co., Ltd	Chongqing Line 4 Phase 2	36	144	AS models
22	May 2021	Tianjin CRRC Sifang Rail Vehicle Co., Ltd	Tianjin Metro Line 9 Phase 1 and Phase 2 were renewed	38	76	overhaul
23	September 2021	CRRC Nanjing Puzhen Vehicle Co., Ltd	Shaoxing Line 2	1	2	
24	September 2021	Hangzhou CRRC Vehicle Co., Ltd	Shaoxing Line 2	10	20	
25	September 2021	Wenzhou CRRC Sifang Rail Vehicle Co., Ltd	Wenzhou city S2 line	37	74	municipality
26	March 2022	Qingdao Zhonggong Jihua	Special 5G mining vehicle	3	6	Special type of car
27	May 2022	CRRC Chengdu Locomotive and Rolling Stock Co., Ltd	Chengdu Line 19 Phase II	45	90	municipality
28	May 2022	Chengdu Changke Xinzhu Rail Transit Equipment Co., Ltd	Chengdu Line 8 Phase II	11	22	
29	Expected December 2022	CRRC Chengdu Locomotive and Rolling Stock Co., Ltd	Chengdu Line 27	29	58	



Chengdu Yonggui Toyo rail transit equipment Co., LTD

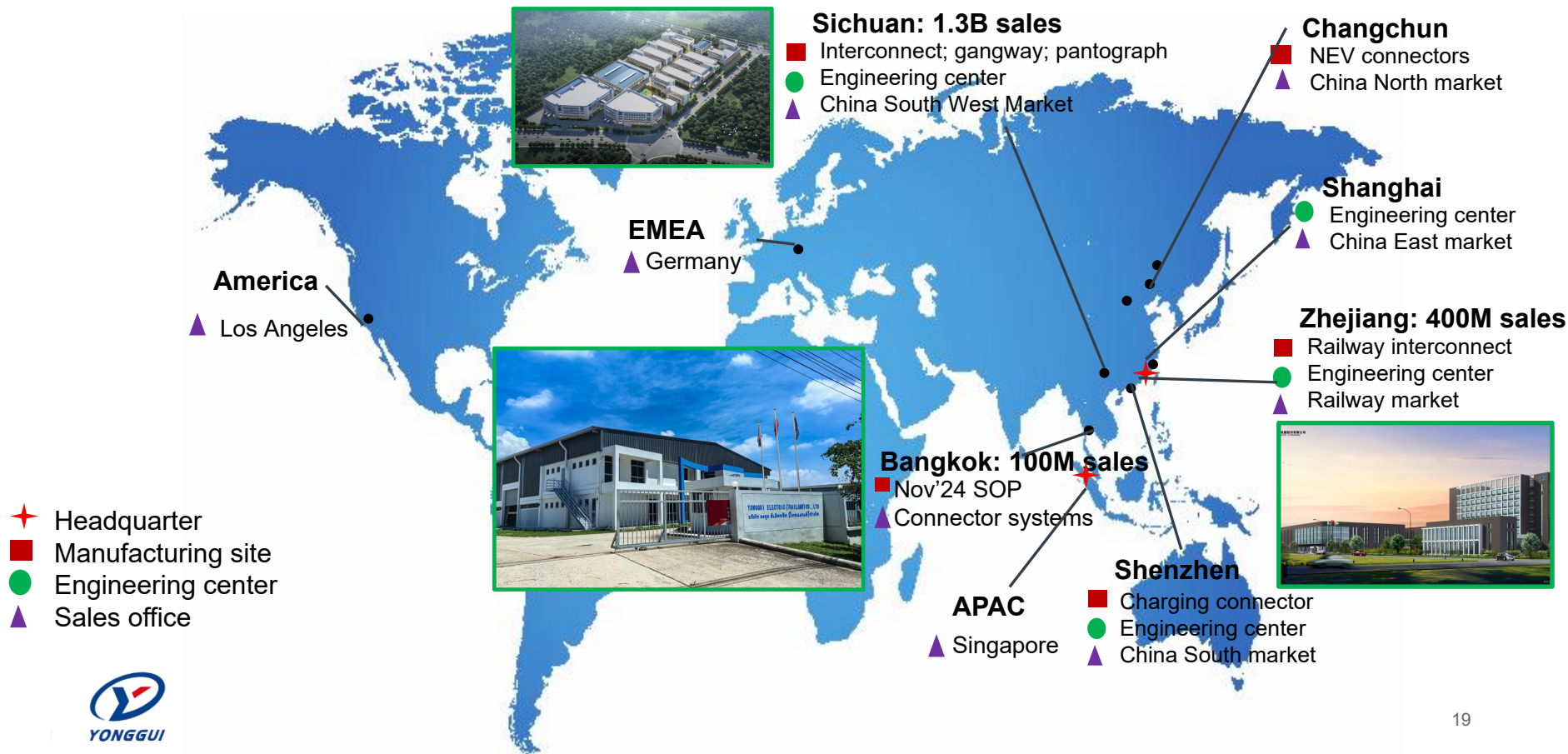
30	Expected December 2022	Tianjin CRRC Sifang Rail Vehicle Co., Ltd	Tianjin Jinghai Line	10	20	
31	Expected December 2022	Chengdu Changke Xinzhu Rail Transit Equipment Co., Ltd	Chengdu Line 30	36	72	
32	Expected March 2023	CRRC Chengdu Locomotive and Rolling Stock Co., Ltd	Ziyang line	11	22	
total				643	1506	

Axle Counter Projects



Serial number	Customer Name	Project Name	Scope of delivery	Availability	Year of delivery
1	Zhejiang Zhonghe Technology Co., Ltd.	Chongqing Line 2 Reconstruction	Fully electronic interlocking cabinet + connector cable + CBTC simulation cabinet	Completed delivery	2020
2	Beijing Yonglie Technology Co., Ltd.	Chongqing Line 2 Reconstruction	Axle counter system + magnetic head cable	Completed delivery	2020
3	Zhejiang Zhonghe Technology Co., Ltd.	Hangzhou 7 simulation cabinet training machine	CBTC simulation cabinet	Completed delivery	2020
4	Zhejiang Zhonghe Technology Co., Ltd.	Hangzhou Line 9 Depot	Fully electronic interlocking cabinet + connector cable	Completed delivery	2020
5	Zhejiang Zhonghe Technology Co., Ltd.	Ningbo Line 5	Fully electronic interlocking cabinet + switch cabinet + CBTC simulation cabinet + connector cable	Completed delivery	2020
6	Zhejiang Zhonghe Technology Co., Ltd.	Jiaxing Tram	Switchgear	Completed delivery	2020
7	Zhejiang Zhonghe Technology Co., Ltd.	Hangzhou 5 simulation cabinet training machine	Fully electronic interlocking cabinet	Completed delivery	2020
8	Zhejiang Zhonghe Technology Co., Ltd.	Jinyidong Urban Line	CBTC simulation cabinet	Completed delivery	2020
9	Zhejiang Zhonghe Technology Co., Ltd.	Jiaxing Tram Qingfeng Parking Lot Station	Switchgear	Completed delivery	2020
10	Beijing Yonglie Technology Co., Ltd.	Huangshi Modern Tram	Turnout control system + on-board system + axle counter system + magnetic head cable	Completed delivery	2021
11	Zhejiang Zhonghe Technology Co., Ltd.	Chongqing Metro Line 4 Phase II	Fully electronic interlocking cabinet + switch cabinet + connector cable	Completed delivery	2021
12	Zhejiang Zhonghe Technology Co., Ltd.	Hangzhou Line 3 North Extension	CBTC simulation cabinet	Completed delivery	2021
13	Zhejiang Zhonghe Technology Co., Ltd.	Chengdu TACS Car-to-Car Communication	Fully electronic interlocking cabinet + connector cable	Completed delivery	2021
14	Zhejiang Zhonghe Technology Co., Ltd.	Shaoxing Line 2	Fully electronic interlocking cabinet + switch cabinet + CBTC simulation cabinet + connector cable	Completed delivery	2022
15	Zhejiang Zhonghe Technology Co., Ltd.	Wenzhou Urban S2 Line	CBTC simulation cabinet	Completed delivery	2022
16	Zhejiang Zhonghe Technology Co., Ltd.	Chongqing Line 18	Fully electronic interlocking cabinet + switch cabinet + connector cable + CBTC simulation cabinet	Completed delivery	2022
17	Zhejiang Zhonghe Technology Co., Ltd.	Zhengzhou Line 12	CBTC simulation cabinet	Completed delivery	2022
18	Zhejiang Zhonghe Technology Co., Ltd.	Shanghai Yipeng Test Line	Turnout control system + fully electronic interlocking cabinet + connector cable	Completed delivery	2023
19	Zhejiang Zhonghe Technology Co., Ltd.	Chuning Intercity	CBTC simulation cabinet	Completed delivery	2023
20	Zhejiang Zhonghe Technology Co., Ltd.	Xi'an Line 8	Fully electronic interlocking cabinet + switch cabinet + CBTC simulation cabinet + connector cable	Completed delivery	2023
21	Tianneng New Energy (Huzhou) Co., Ltd.	Lead-carbon battery energy storage cabinet	Energy storage cabinet	Completed delivery	2023
22	Zhejiang Zhonghe Technology Co., Ltd.	Tianjin Jinghai Training Center	CBTC simulation cabinet	Completed delivery	2023
23	Beijing Yonglie Technology Co., Ltd.	Ningbo Line 8	Axle counter system + magnetic head cable	Completed delivery	2024
24	Beijing Yonglie Technology Co., Ltd.	Mexico City Monterrey Monorail Lines 4 & 6	Axle counter system + magnetic head cable	Now Available	2024
25	Beijing Yonglie Technology Co., Ltd.	Ningbo Line 6	Axle counter system + magnetic head cable	Now Available	2024
26	Beijing Yonglie Technology Co., Ltd.	Chongqing Line 15	Axle counter system + magnetic head cable	Now Available	2024
27	Beijing Yonglie Technology Co., Ltd.	Ningci Urban Line	Axle counter system + magnetic head cable	Design and development	2024

Globalizing Sales & Operation Footprint



Global Partnership



YONGGUI

Jay Sun

General Manager –Global Business

Jaysun@yonggui.com

whatsapp: +86 13564872231

